

Private & Confidential – FOR INVESTOR MEETING USE ONLY



Total Value of Business = ~~MYR 230,000~~

Selling Price = MYR 88,800

Private & Confidential – FOR INVESTOR MEETING USE ONLY



Enrichment Program

Bar Model

Number Bonds



Number Bonds of 9



About SAM Singapore Maths

- We provide tuition and enrichment for children age **4 to 12 years old.**
- Conceptual Arithmetic
- Word Problems.
- Heuristics



- SAM Singapore Maths is a **thinking maths**
- We focus on **word problems**
- Complement with current **Malaysia KSSR** syllabus , ICGSE, Cambridge etc

USP 1

Best

Location



ANNOUNCEMENT

In conjunction with tomorrow's public holiday, there will be no classes. TQ



Private & Confidential – FOR INVESTOR MEETING USE ONLY

BEST LOCATION & PARENTS' CROWD



- Above 7-11
- Walking distance to banks
- Good crowd of parents as many learning centres around
- Walking distance to SJKC Desa Jaya 2
- Convenient stores & eateries are in walking distance

Private & Confidential – FOR INVESTOR MEETING USE ONLY

Nearby Schools

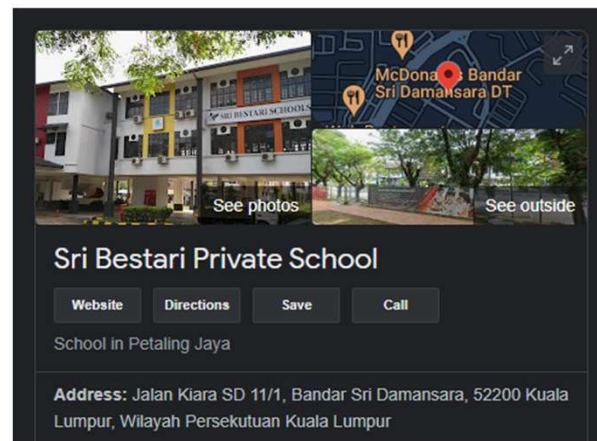


SJK (C) Desa Jaya 2 (Sekolah Jenis Kebangsaan (Cina) Desa Jaya 2)

School in Petaling Jaya

Address: Persiaran Perdana Pju 9, Bandar Sri Damansara, 52200 Kuala Lumpur, Selangor

**Walking
2 minutes**



Sri Bestari Private School

School in Petaling Jaya

Address: Jalan Kiara SD 11/1, Bandar Sri Damansara, 52200 Kuala Lumpur, Wilayah Persekutuan Kuala Lumpur

**Driving
3 minutes**



Sri Bestari International School

International school in Petaling Jaya

Address: Persiaran Margosa, Bandar Sri Damansara, 52200 Kuala Lumpur, Selangor

**Driving
3 minutes**

**We provide math class in Sri Bestari Private School
BEST channel to market the centre to more parents!**

Other Nearby Schools

- Sri Bestari School
Driving distance 3 minutes
- SK Bandar Sri Damansara (1)
Driving distance 4 minutes
- SK Bandar Sri Damansara (2)
Driving distance 5 minutes
- SJKC Desa Jaya 2
Walking distance 2 minutes
- SK Menjalara
Driving distance 13 minutes
- SJKC Kepong 3
Driving distance 15 minutes
- SK Sri Kepong
Driving distance 16 minutes

USP 2

**Fully
Renovated
and furnished**



Private & Confidential – FOR INVESTOR MEETING USE ONLY



Small room



Big Classroom

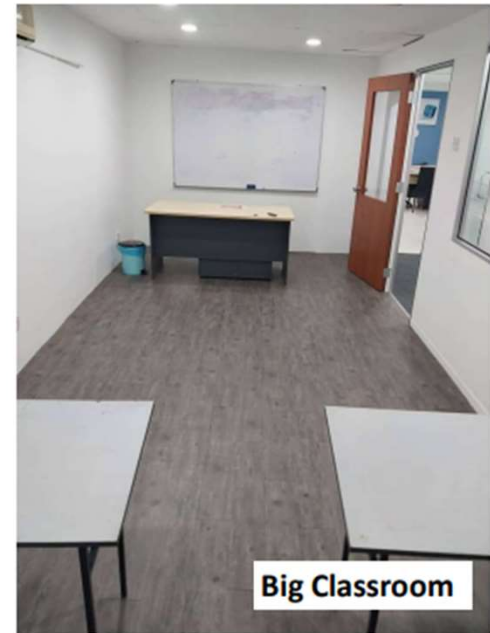


Small room



Big Classroom

Five Classrooms



Big Classroom

Private & Confidential – FOR INVESTOR MEETING USE ONLY

ITEM 1 Sofa (1 unit)

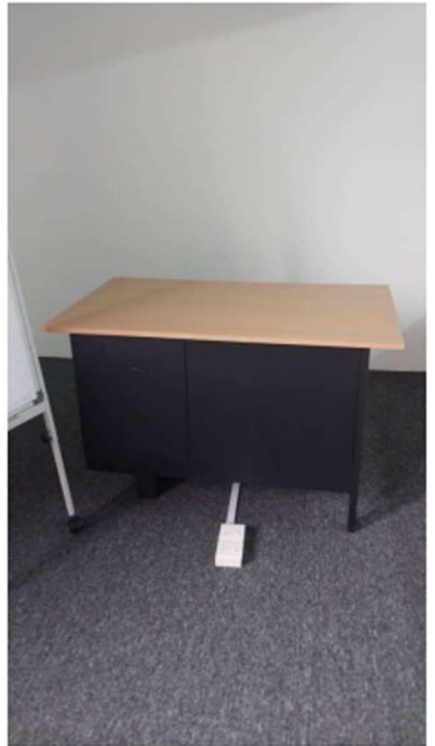


ITEM 2 Whiteboard (4 units)



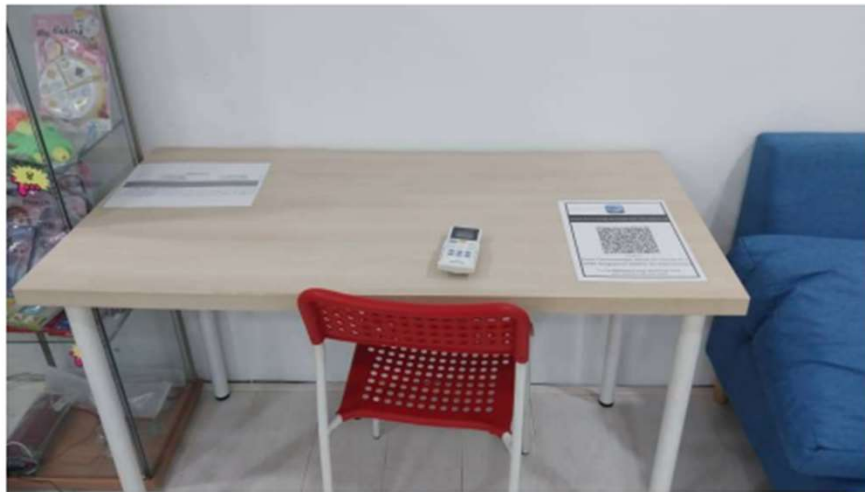
Private & Confidential – FOR INVESTOR MEETING USE ONLY

ITEM 3 Teacher's Table (3 units)



Private & Confidential – FOR INVESTOR MEETING USE ONLY

ITEM 4 Student's Table (16 units)



Private & Confidential – FOR INVESTOR MEETING USE ONLY

ITEM 5 Chair (22 units)



Private & Confidential – FOR INVESTOR MEETING USE ONLY

ITEM 6
Glass Cupboard
(1 unit)



ITEM 7
Wooden Cupboard
(4 units)

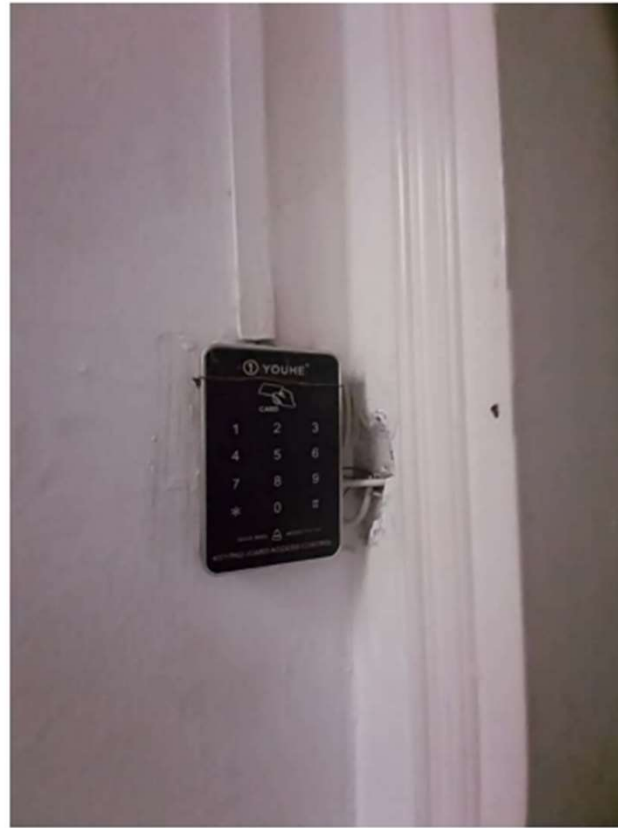


Private & Confidential – FOR INVESTOR MEETING USE ONLY

ITEM 8 Aircons (7 units)



ITEM 9 Door Access (1 unit)



Private & Confidential – FOR INVESTOR MEETING USE ONLY

Total Expenditure on Centre Setup

Renovation = ~ MYR 100k

Furniture = ~ MYR 35k

You will get all upon sales transactions

USP 3

100% Operating
Business +
Profitability
Potential



Basic P&L

	SAM Sri Damansara
Incomes	
Number of Students	43
Lesson Fees Collected/month	7224
Rental Income	0
CCA class (Sri Bestari)	1195.1
TOTAL:	7224
Expenses	
Royalty	714
Rental	1900
Cleaning	0
Salary (full-time)	3562.45
Salary (part-time)	740
Salary (allowance Sunday)	0
Utilities (Unifi)	0
Utilities (Electric & Water)	150
Office supplies	on and off
TOTAL:	7066.45
PROFIT & LOSS	157.55

With current model/setup,
you just need **43 students**
to breakeven

We run only 1 full day
(Saturday) + 2 half days

Database of Parents & Students in Sri Damansara Area

100% \$ % .0 .00 123 Calibri 11 B I S A

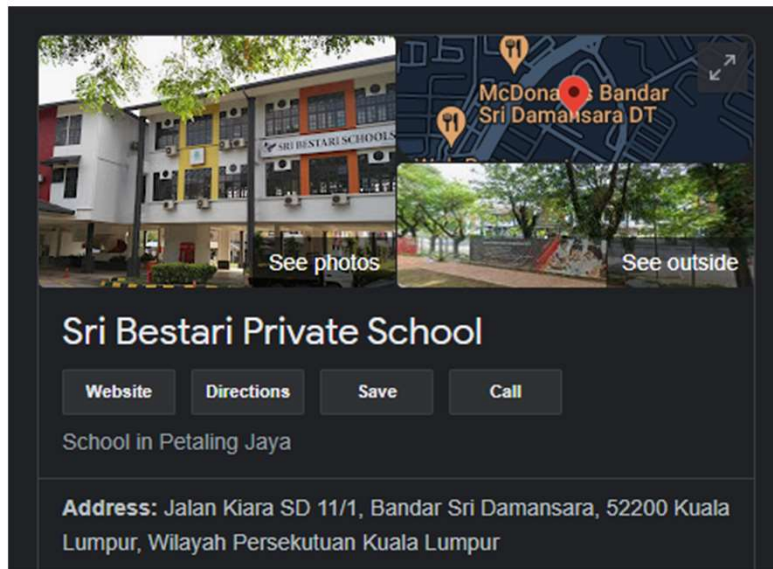
	A	D	E	F	G	H	I
63	Client_SD Lo Min Wei (Melody)	TRUE	TRUE	Aug-21-20	value 1	value 2	
64	Client_SD Denise (Raw Sze Yun)	TRUE	TRUE	Aug-21-20	value 1	value 2	
65	Client_SD Stephanie Ng (Yannies)	TRUE	TRUE	Aug-21-20	value 1	value 2	
66	Client_SD April (Adam)	TRUE	TRUE	Aug-21-20	value 1	value 2	
67	Client_SD Ms.Pang (Jia Uu)	TRUE	TRUE	Aug-21-20	value 1	value 2	
68	Client_SD Audrey (Desiree)	TRUE	TRUE	Aug-21-20	value 1	value 2	
69	Client_SD Yan Ting (Annabelle)	TRUE	TRUE	Aug-21-20	value 1	value 2	
70	Client_SD Manoj (Arnav & Viian)	TRUE	TRUE	Aug-21-20	value 1	value 2	
71	Client_SD Peggy (Choo Jin & Cho)	TRUE	TRUE	Aug-21-20	value 1	value 2	
72	Client_SD Eddie (Jason)	TRUE	TRUE	Aug-21-20	value 1	value 2	
73	Client_SD Shirley (Le Shyuen)	TRUE	TRUE	Aug-21-20	value 1	value 2	
74	Client_SD Yi Mei (Juin Yik)	TRUE	TRUE	Aug-21-20	value 1	value 2	
75	Client_SD Yen Hsia (Jun Yu)	TRUE	TRUE	Aug-21-20	value 1	value 2	
76	Client_SD Wan Foong (Clement)	TRUE	TRUE	Aug-21-20	value 1	value 2	
77	Client_SD Viki Ng (Gan Yee Tung)	TRUE	TRUE	Aug-21-20	value 1	value 2	
78	Client_SD Thamil (Sourishan)	TRUE	TRUE	Aug-21-20	value 1	value 2	

sd 1 of 357

**Around
300-400
database for
you!**

Private & Confidential – FOR INVESTOR MEETING USE ONLY

We provide CCA Classes in School

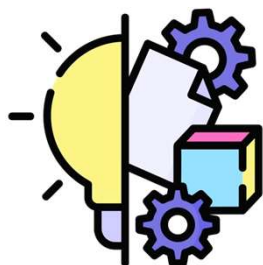


From 14-20 students
each batch

End goal : Move them
back to centre!

Potential of the business

1



Add more subjects to the same pool of students **(other than just maths)**

2



Can switch this like an **Education & Enrichment Hub**

3



Turn the database & school network **to grow your business**

4



Renting to other lesson providers, workshop, events etc

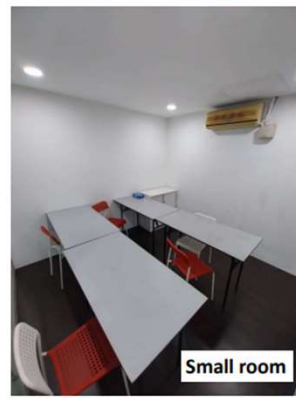
Private & Confidential – FOR INVESTOR MEETING USE ONLY

Rent out rooms

(additional cashflow few hundreds / thousands MYR)



Small room



Small room



Big Classroom

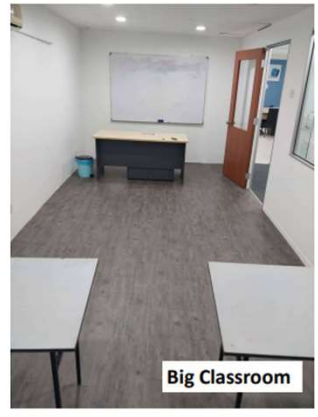


Big Classroom

Event Space

(additional cashflow few hundreds / thousands MYR)

Five Classrooms



Big Classroom

Open everyday Daycare/childcare

(additional cashflow thousands MYR)

Holiday Programme

(additional cashflow few hundreds MYR per event)

Add more subjects, ie, music, English, science, public speaking, coding etc

(additional monthly cashflow few thousands to 5-figure MYR)

USP 4

Selling price &
simple
projection



Private & Confidential – FOR INVESTOR MEETING USE ONLY

Renovation = ~ MYR 100k

Furniture = ~ MYR 35k

Annual revenue = ~ MYR 100k

Ready teacher resources

Ready students

Ready school connections

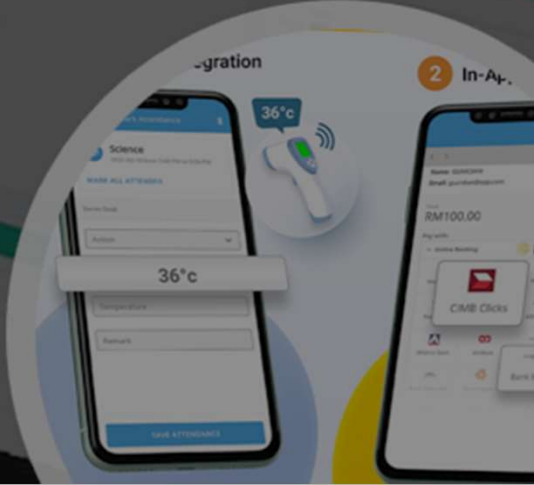
Not start from scratch

**Selling Price is
@ MYR 88,800 only!**

If one month can generate +ve cashflow MYR 10k+, less than one year you can gain back ROI

USP 5

Smooth Handover



We care about the students & business continuity

- Smooth handover of business
- Minimize the changes in operation to avoid student withdrawal
- Sharing the know-how in student recruitments & open day
- Introduce to school partner that we have
- Support you post-transaction cause we care about the business & students (optional)

SUMMARY



Private & Confidential – FOR INVESTOR MEETING USE ONLY

100% OPERATING BUSINESS



- ✓ Only handover
- ✓ Fully renovated & 100% operated
- ✓ Walking distance to government primary school
- ✓ Bring class to nearby international school for best student recruitment
- ✓ BEST location with a lot of parents passing by
- ✓ Highly profitable if run on full-time & maximize all 5 classrooms

Private & Confidential – FOR INVESTOR MEETING USE ONLY

To know more, arrange for Site Visit

Darren



017-7105840



shiouwah@gmail.com